

GUIDE PRICE  
**£140,000+**

BIDDING DEPOSIT  
**£3,500**

DIGITAL AUCTION DATE  
**24th July 2019**

BY ORDER OF

 **Fraser**  
real estate

On the instruction of the  
Joint Fixed Charge Receivers



## **12 Forsythia Gardens, Nottingham, NG7 2LW**

Freehold two floor end of terrace house with an HMO licence

**Bid1.**  
Digital Trading Platform



## Property Summary

- Freehold end of terrace house
- Licensed HMO
- Close to the University of Nottingham
- Investment opportunity
- **BY ORDER OF THE FIXED CHARGE RECEIVERS**

## Location

Situated off Penn Avenue within a popular student rental area - half a mile to the east of the University Hospital Medical Centre and one mile to the north east of Nottingham University. The city centre is 1.5 miles to the east. Public transport includes Nottingham railway station, there are also several local bus services providing good access to the centre. Local shopping amenities are on Park Road. There are numerous fashionable shops bars and restaurants available within the city centre. Recreation amenities are at Lenton Recreation Ground.

## Accommodation

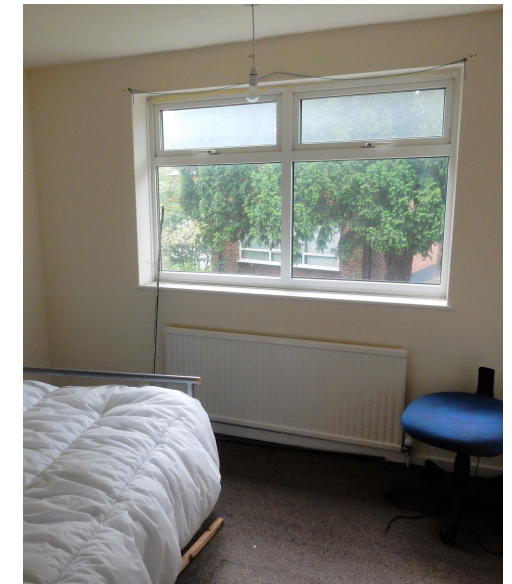
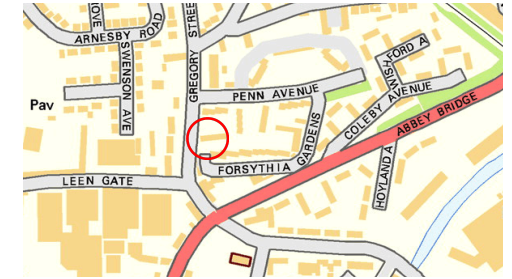
First floor: Four bedrooms, bathroom/wc  
Ground floor: Open plan reception room / kitchen, reception room, bathroom/wc.  
Outside: Front and rear garden.

## Note

We are advised that the property has an HMO licence for 4 people. Interested parties must rely on their own enquiries in this regard.

## Viewings

Please refer to our website for further information



These Particulars were downloaded from BidX1.com. Buyers are strongly advised and assumed to have returned to BidX1.com to read the full terms and conditions associated with this lot, and check the Special Conditions and any applicable Addendum, prior to bidding. Additional costs, charges and encumbrances may apply for Buyers once they have made a successful bid in relation to a property. Where a guide price (or range of prices) is given, that guide is the minimum price at which, or range of prices within which, the seller may be prepared to sell on the date on which the guide price, or range of prices, is published. Please see full disclaimer on BidX1.com for limitations regarding the liability of BidX1.

Guide Prices are issued without responsibility and as a general indication of the current level of the vendor's intentions as to the reserve price, which is the seller's minimum acceptable price at auction the figure below which the auctioneer cannot sell. The sale price whether prior to or at the auction can be above or below the guide price depending upon market activity. Guide Prices can vary up to and including the day of the sale. Updates are available on line at [www.bidx1.com](http://www.bidx1.com)



## Contact BidX1

Jeremy Lamb MRICS  
[jeremy.lamb@bidx1.com](mailto:jeremy.lamb@bidx1.com)  
+44 (0) 20 7703 4401