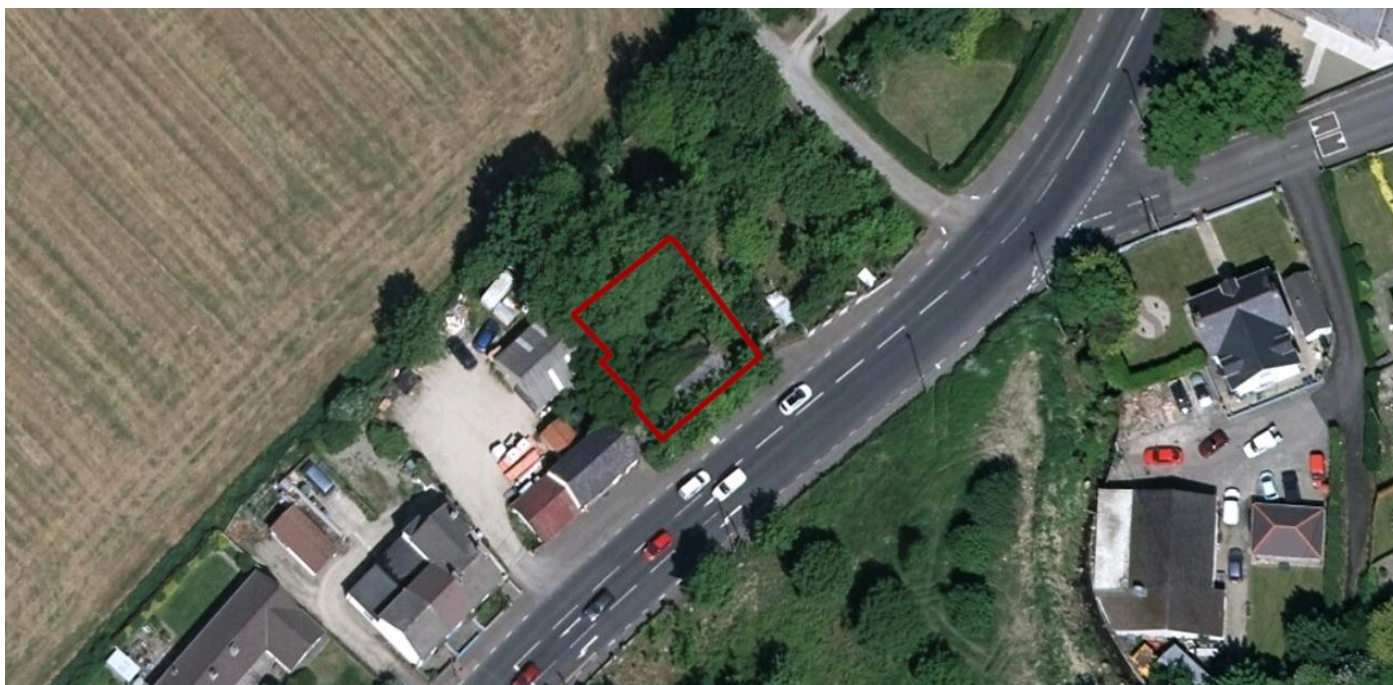


Land at 76 Victoria Road, Newbuildings, Londonderry, County Londonderry BT47 2RL

Freehold site with development potential (subject to consents)



Property Summary

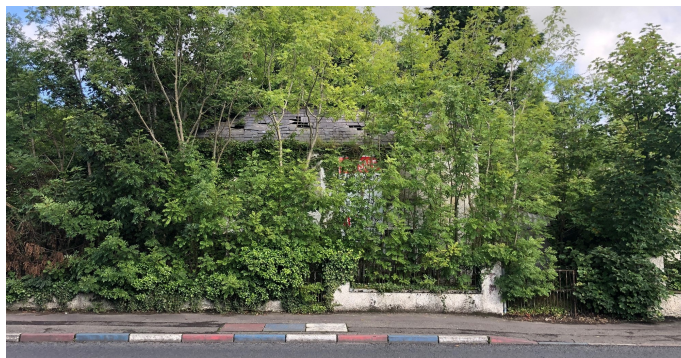
- Freehold site
- Development potential (subject to consents)
- Full vacant possession

Location

Situated within the village of Newbuildings on the Victoria Road (A2) which runs south from the centre of Londonderry / Derry approximately 3 miles away. Public transport includes Derry / Londonderry railway station. Shopping amenities are at Foyle's Shopping Centre. Recreation amenities can be found at the Top of Hill Park and the City of Derry Golf Club nearby.

Planning

Planning permission (Ref: A/2007/0970/RM and A/2006/0169/O) previously granted for the erection of a pair of semi-detached dwellings to replace the existing dwelling - These are now lapsed.



These Particulars were downloaded from BidX1.com. Buyers are strongly advised and assumed to have returned to BidX1.com to read the full terms and conditions associated with this lot, and check the Special Conditions and any applicable Addendum, prior to bidding. Additional costs, charges and encumbrances may apply for Buyers once they have made a successful bid in relation to a property. Where a guide price (or range of prices) is given, that guide is the minimum price at which, or range of prices within which, the seller may be prepared to sell on the date on which the guide price, or range of prices, is published. Please see full disclaimer on BidX1.com for limitations regarding the liability of BidX1.

Guide Prices are issued without responsibility and as a general indication of the current level of the vendor's intentions as to the reserve price, which is the seller's minimum acceptable price at auction the figure below which the auctioneer cannot sell. The sale price whether prior to or at the auction can be above or below the guide price depending upon market activity. Guide Prices can vary up to and including the day of the sale. Updates are available on line at www.bidx1.com



Contact BidX1

Jeremy Lamb MRICS
jeremy.lamb@bidx1.com
+44 (0) 20 7358 5653