

GUIDE PRICE
£220,000

BIDDING DEPOSIT
£3,500

DIGITAL AUCTION DATE
3rd March 2020



BY ORDER OF
**A Housing
Association**



175 Lower Road, Belvedere, Kent DA17 6DQ

A freehold three bedroom end-of-terrace house requiring refurbishment with full vacant possession

Bid1.

Property Summary

- By order of a major Housing Association
- Freehold three bedroom house
- Requiring refurbishment
- Rear garden
- Full vacant possession

Location

Belvedere lies within south-east London along the southern banks of the River Thames and to the west of the M25 motorway and Queen Elizabeth Bridge river crossing. The area is a mix of established commercial and dense residential development. The property is situated on the north side of Lower Road almost opposite the junction with Bullbanks Road.

There is a regular train service from nearby Belvedere Station into London (Cannon Street).

Description

The property comprises a two storey end-of-terrace modern house with part tile hung elevations beneath a pitched roof. The property has three bedrooms with a garden to the front and rear with a passage way running along the side of the property. The property will require some refurbishment and redecoration.

Accommodation

First floor: Three bedrooms, bathroom/wc

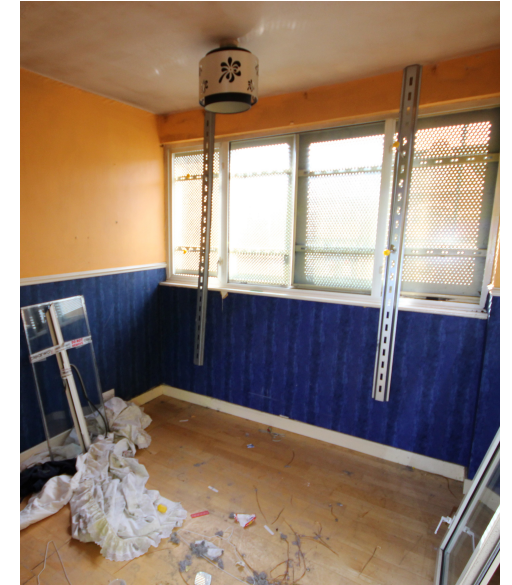
Ground floor: Reception room, kitchen/breakfast room,

Outside: Rear garden

The property benefits from central heating (not tested)

Tenure

Freehold



These Particulars were downloaded from BidX1.com. Buyers are strongly advised and assumed to have returned to BidX1.com to read the full terms and conditions associated with this lot, and check the Special Conditions and any applicable Addendum, prior to bidding. Additional costs, charges and encumbrances may apply for Buyers once they have made a successful bid in relation to a property. Where a guide price (or range of prices) is given, that guide is the minimum price at which, or range of prices within which, the seller may be prepared to sell on the date on which the guide price, or range of prices, is published. Please see full disclaimer on BidX1.com for limitations regarding the liability of BidX1.

Guide Prices are issued without responsibility and as a general indication of the current level of the vendor's intentions as to the reserve price, which is the seller's minimum acceptable price at auction the figure below which the auctioneer cannot sell. The sale price whether prior to or at the auction can be above or below the guide price depending upon market activity. Guide Prices can vary up to and including the day of the sale. Updates are available on line at www.bidx1.com



Contact BidX1

Joel Ferree MNAVA

joel.ferree@bidx1.com

+44 (0)20 7358 5652