

GUIDE PRICE
£50,000

BIDDING DEPOSIT
£3,500

DIGITAL AUCTION DATE
7th April 2020

BY ORDER OF

JCDecaux



Land at Huddersfield Road, Salterhebble/Halifax, West Yorkshire HX3 9LJ

A freehold site of about 135,410 sq ft (12,580 sq m) or 1.258 hectares (3.1086 acres) that could be developed or suit alternative use (including advertising) subject to any necessary consents

Bid1.

Property Summary

- Freehold site of about 135,410 sq ft (12,580 sq m) or 1.258 hectares (3.1086 acres)
- Prominent roadside location
- Development or alternative use potential, subject to consents
- Vacant possession

Location

Salterhebble is an area of Halifax, a town within Calderdale, in West Yorkshire that falls within the Skircoat ward of Calderdale Council. Salterhebble is located where the Hebble Brook flows into the River Calder. It is on the main route into Halifax from Huddersfield and Brighouse. The main road in Salterhebble is the A629 Huddersfield Road/Salterhebble Hill with the site being located along the east side of Huddersfield Road to the junction with Exley Bank.

Description

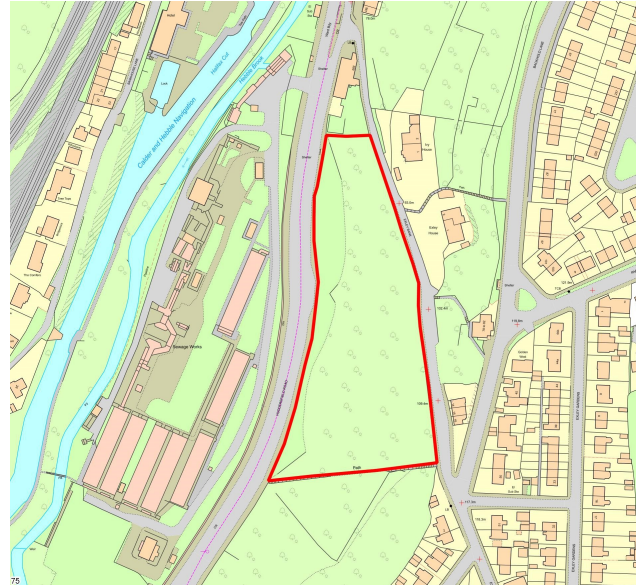
An irregular shaped site of about 135,410 sq ft (12,580 sq m) or 1.258 hectares (3.1086 acres)

Planning

Calderdale Metropolitan Borough Council (01422 392237)
www.calderdale.gov.uk

VAT

VAT is not applicable



EPC

Refer to the legal pack

Tenure

Freehold

Address	Acres	Hectares
Land at Huddersfield Road	3.1086 acres	1.258 hectares

Please note that any plans or photographs used are to help locate the property and may not show the exact legal boundaries. Prospective purchasers are advised to refer to the title plan in the legal pack. The areas have been provided by the vendor.

These Particulars were downloaded from BidX1.com. Buyers are strongly advised and assumed to have returned to BidX1.com to read the full terms and conditions associated with this lot, and check the Special Conditions and any applicable Addendum, prior to bidding. Additional costs, charges and encumbrances may apply for Buyers once they have made a successful bid in relation to a property. Where a guide price (or range of prices) is given, that guide is the minimum price at which, or range of prices within which, the seller may be prepared to sell on the date on which the guide price, or range of prices, is published. Please see full disclaimer on BidX1.com for limitations regarding the liability of BidX1.

Guide Prices are issued without responsibility and as a general indication of the current level of the vendor's intentions as to the reserve price, which is the seller's minimum acceptable price at auction the figure below which the auctioneer cannot sell. The sale price whether prior to or at the auction can be above or below the guide price depending upon market activity. Guide Prices can vary up to and including the day of the sale. Updates are available on line at www.bidx1.com



Contact BidX1

Mat Harris

mat.harris@bidx1.com

+44 (0) 20 3929 8291