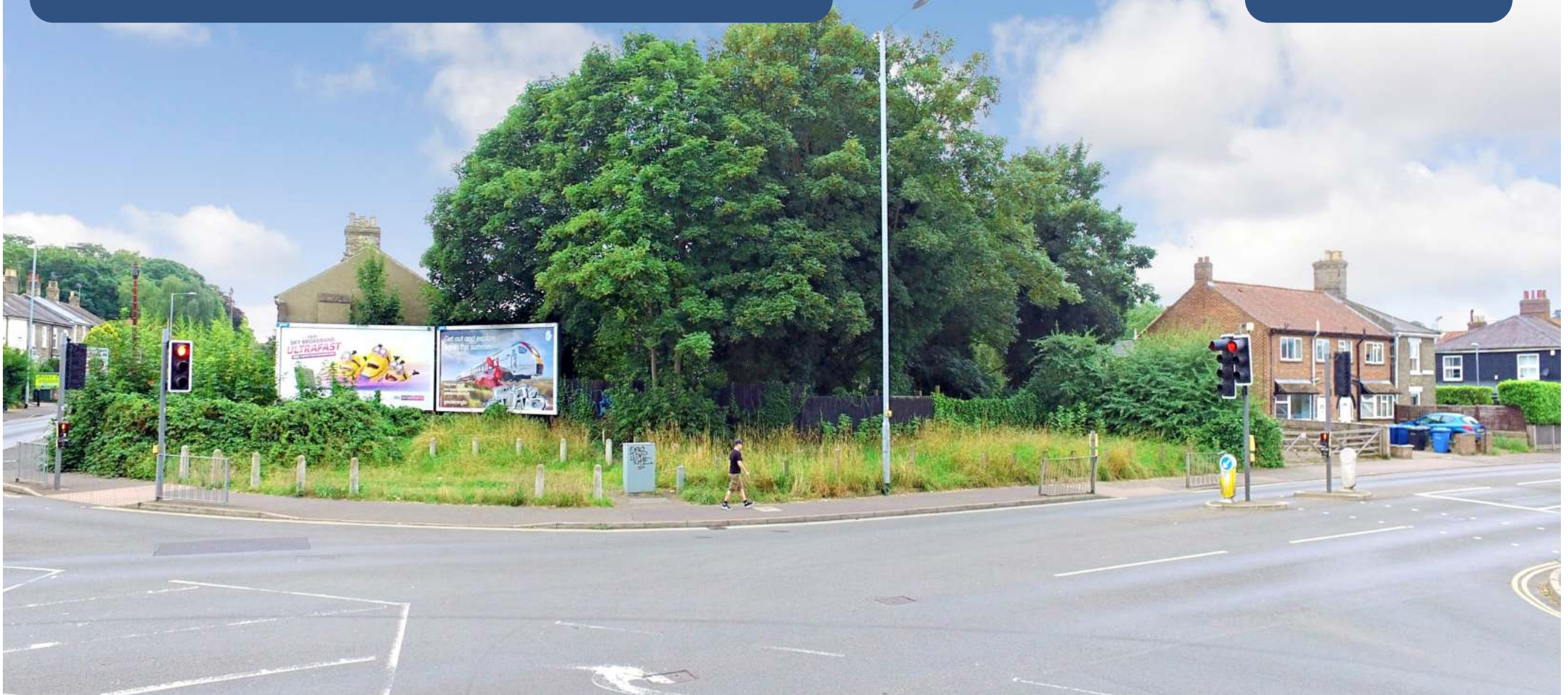


GUIDE PRICE
£90,000

BIDDING DEPOSIT
£9,000

DIGITAL AUCTION DATE
15th September 2021

BY ORDER OF
JCDecaux



Land at 112 – 114 Dereham Road/Heigham Road, Norwich, NR2 3AE

A freehold former advertising hoarding site of approximately 711.35 sq m (7,657sq ft) or 0.071 hectares (0.176 acres) (X4 titles) – possible development

Bid1.

Property Summary

- Freehold possible development site
- Approximately 711.35 sq m (7,657sq ft)
- Alternative use potential (subject to consents)
- Vacant possession on completion

Location

Norwich is a city in Norfolk, on the River Wensum about 100 miles north-east of London. As the county town of Norfolk and seat of the See of Norwich, with one of the country's largest medieval cathedrals, it is claimed traditionally as the chief city of East Anglia. The sites are located on Dereham Road on its junction with Heigham Road, in a mainly residential area. Tesco Express are located opposite.

Description

An irregular shaped plot that totals about 711.35 sq m (7,657sq ft) or 0.071 hectares (0.176 acres), located in a mainly residential area and may suit a development, subject to obtaining any necessary consents. There are 2 X 48 sheets remaining on the site. The sale will be of X4 separate titles (refer to the legal pack).

Planning

Norwich City Council (01603 212092) www.norwich.gov.uk

VAT

VAT is not applicable

Tenure

Freehold



These Particulars were downloaded from BidX1.com. Buyers are strongly advised and assumed to have returned to BidX1.com to read the full terms and conditions associated with this lot, and check the Special Conditions and any applicable Addendum, prior to bidding. Additional costs, charges and encumbrances may apply for Buyers once they have made a successful bid in relation to a property. Where a guide price (or range of prices) is given, that guide is the minimum price at which, or range of prices within which, the seller may be prepared to sell on the date on which the guide price, or range of prices, is published. Please see full disclaimer on BidX1.com for limitations regarding the liability of BidX1.

Guide Prices are issued without responsibility and as a general indication of the current level of the vendor's intentions as to the reserve price, which is the seller's minimum acceptable price at auction the figure below which the auctioneer cannot sell. The sale price whether prior to or at the auction can be above or below the guide price depending upon market activity. Guide Prices can vary up to and including the day of the sale. Updates are available on line at www.bidx1.com



Contact BidX1

Mat Harris

mat.harris@bidx1.com

+44 (0) 20 3929 8291