

By order of the Liquidator



**Bid1.**

## Former Social Club, 1 Chandos Place, Milton Keynes, Bletchley MK2 2SQ

 **SIAGROUP**  
ASSET INGENUITY®

Substantial freehold former social club of approximately 1,070.40 sq m (11,523 sq ft) suitable for a variety of uses or redevelopment, subject to obtaining the necessary consents. Vacant possession.

**Guide price £450,000 | Bidder security £6,000**

# Property Summary

- Freehold former social club
- Corner building arranged over ground, basement first and second floors
- 1,070.40 sq m (11,523 sq ft)
- Site area
- May suit alternative uses
- Vacant possession



Former Social  
Club



Bletchley  
Milton Keynes

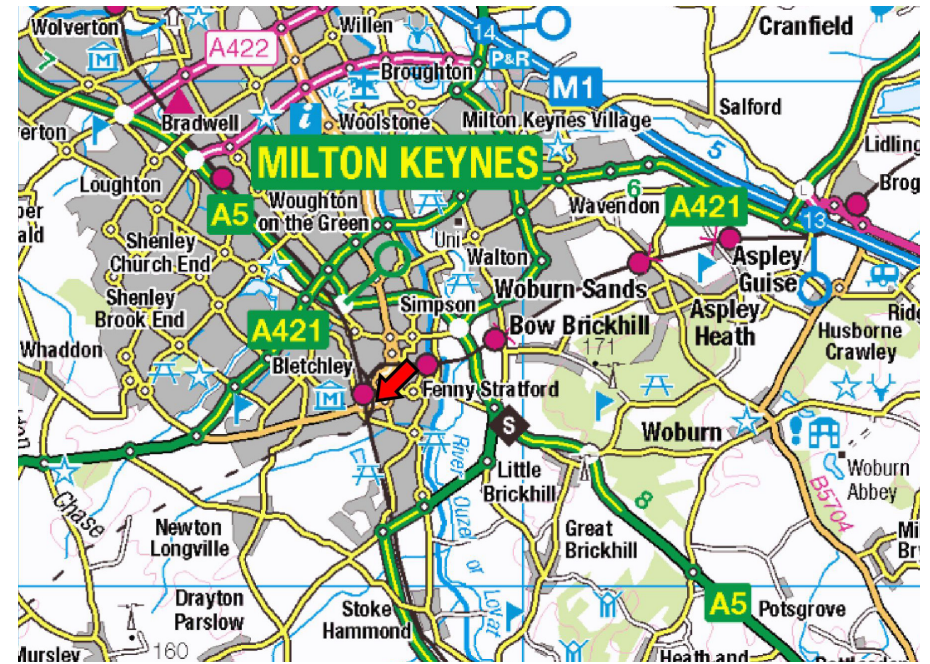


1,070.40 sq m  
(11,523 sq ft)



# Location

Milton Keynes is located 22 miles south of Northampton, 72 miles south-east of Birmingham and 51 miles north-west of London. Bletchley is a constituent town of Milton Keynes and is located south-west of the city. The M1 motorway (Junctions 13 & 14), A5 and A421 as well as Luton Airport, 22 miles to the south-east, provide excellent transport links to the town. Bletchley mainline station is a short walk from the property and has a fastest journey time to London (Euston) of approximately 37 minutes.



The property is situated on the corner of Chandos Place with Duncombe Street, at the roundabout on the south side of the A4034 within the town centre. Brunel shopping centre is immediately to the east of the property in this mixed use area that is currently undergoing improvements and redevelopment.

Bletchley Park, once a top secret home of the World War II code-breakers is also close by and now provides a vibrant local heritage attraction for visitors.



# Description

The property comprises a prominent multi-storey corner building of approx. 1,070.40 sq m (11,523 sq ft).

The property has previously been used as a social club and is now in a state of disrepair.

The property requires complete refurbishment, or it may suit redevelopment subject to obtaining the necessary consents. The site area is 0.078 hectares (0.194 acres).

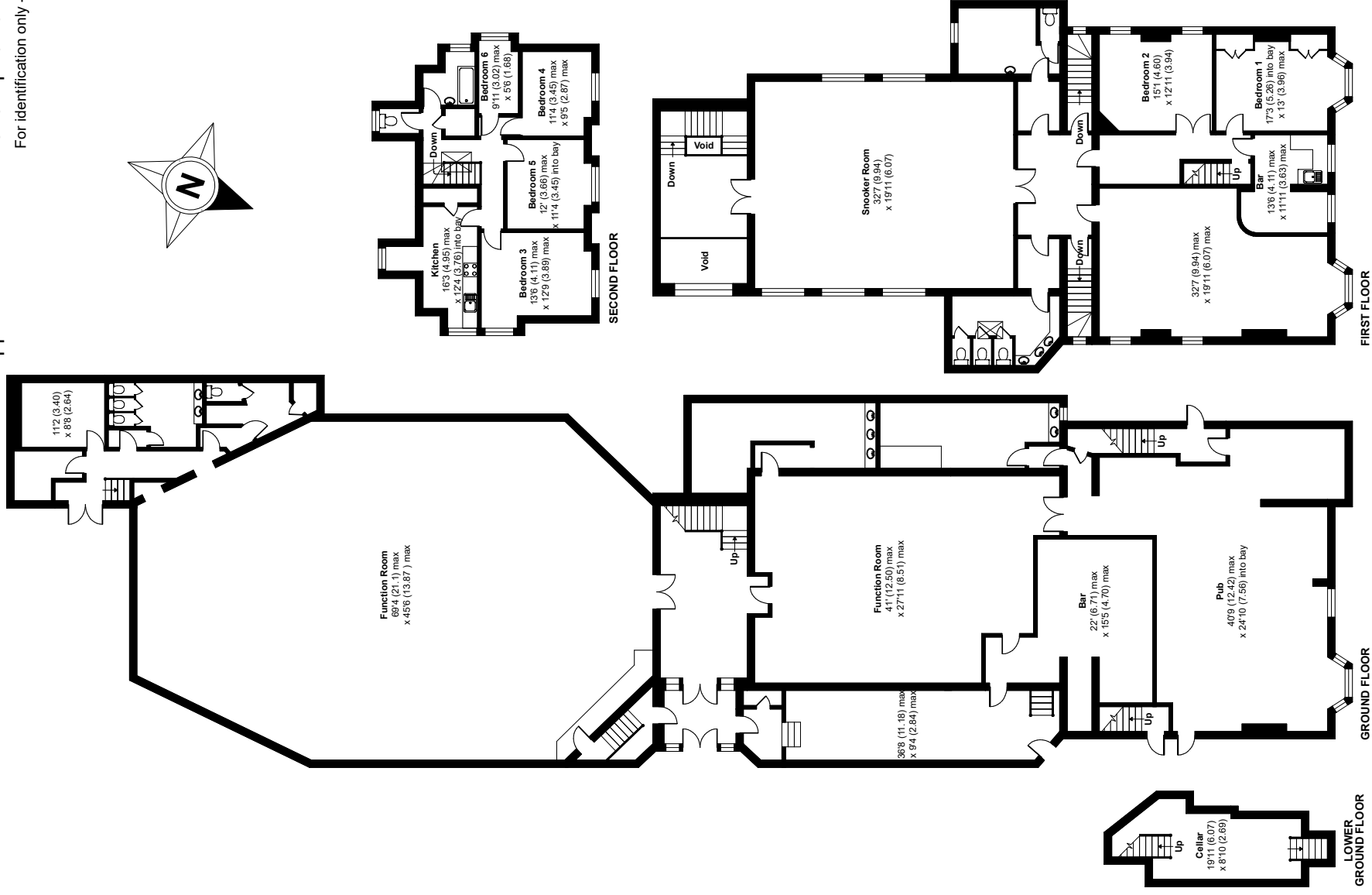
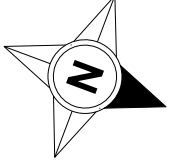
---

Local Authority: Milton Keynes City Council (01908 691691)  
[www.milton-keynes.gov.uk](http://www.milton-keynes.gov.uk)

# Accommodation

Floor	Use
Ground	Entrance Pub Bar Function room Internal storage Hallway Male/Female WC's
Basement	Cellar
First	Office Bar Snooker room Bedroom one Bedroom two Male/Female WC's
Second	Bedroom three Bedroom four Bedroom five Bedroom six Kitchen Bathroom Separate WC
<b>Total</b>	<b>1,070.40 sq m (11,525 sq ft)</b>

Approximate Area = 11523 sq ft / 1070.4 sq m  
For identification only - Not to scale



Certified  
Property  
Measurer

Floor plan produced in accordance with RICS Property Measurement Standards incorporating International Property Measurement Standards (IPMS2 Residential). © ncthecom 2024.  
Produced for Bidx1. REF: 1107309



## Guide Price

£450,000

## Tenure

Freehold

## EPC

Rating B

## VAT

We understand VAT is not payable.



**Oliver Childs | BidX1**

oliver.childs@bidX1.com  
07732 681150

## Viewings

Viewing are strictly by appointment through the selling agents.



**John Wills | SIA Group**

john.wills@sia-group.co.uk  
07785 254793

## Legal documentation

Interested parties should read the legal pack for further information.

Please visit [www.bidx1.com](http://www.bidx1.com) to download the pack.



---

*Important Notice: Clients and any joint agents give notice that: 1. They are not authorised to make or give any representations or warranties in relation to the property either here or elsewhere, either on their own behalf or on behalf of their client or otherwise. They assume no responsibility for any statement that may be made in these particulars. These particulars do not form part of any offer or contract and must not be relied upon as statements or representations of fact. 2. Any areas, measurements or distances are approximate. The text, photographs and plans are for guidance only and are not necessarily comprehensive. It should not be assumed that the property has all necessary planning, building regulation or other consents and BidX1 have not tested any services, equipment or facilities. Purchasers must satisfy themselves by inspection or otherwise. Brochure dated June 2024.*